

Holiday Inn Leamington Spa - Warwick



[View the Access Guide](#)

Olympus Avenue, Tachbrook Park, Leamington Spa, Warwickshire CV34 6RJ

01926 425 522

www.ihg.com/holidayinn/hotels/gb/en/leamington-spa/warls/hoteldetail (<https://www.ihg.com/holidayinn/hotels/gb/en/leamington-spa/warls/hoteldetail>)

Guide Last Updated: 02/03/2018

[Something changed? \(/contact/something_changed?destination=/access-guide/kew-green/holiday-inn-leamington-spa-warwick\)](#)



Google

(<https://maps.google.com/maps?ll=52.276845,-1.551995&z=14&t=m&hl=en-US&q=US&mapclient=apiv3>)

Map data ©2018 Google

Access Guide



[Explain these icons \(/our-icons\)](#)

[Expand all](#) [Collapse all](#)

Hotel Introduction

[Collapse -](#)

Hotel Information

[Collapse -](#)

- The hotel has its own parking facilities.
- This hotel has its own restaurant located on the on the ground floor.
- Conference/meeting facilities are available.
- The conference/meeting facilities are located on the ground, first and second floors.

Room Information

[Collapse -](#)

- The hotel has 91 rooms in total.
- There is an/are accessible room(s) within the hotel.
- The accessible room(s) is/are located on the ground floor.
- The hotel has 2 accessible room(s) with accessible ensuite facilities.
- There is/are 2 accessible room(s) with a bath.
- There is an/are adjoining room(s) available for the accessible room(s).

- The accessible rooms are 38m - 46m from the hotel entrance.
- There is a/are standard room(s) available on the ground floor.
- There is an/are adjoining room(s) available for the standard room(s).
- Rooms on other floors are accessed via stairs or lift.

Auxiliary Aids

Collapse -

- Vibrating pillows with flashing beacons are available on request.
- Bed raisers are not available on request.
- Bath mats are available on request.
- All televisions have subtitles available.

Getting Here

Collapse -

By Road

Collapse -

- The hotel is located off Olympus Avenue on Tachbrook Park to the South West of Leamington Spa.
- This hotel has a car park which is free for guests. Guests must register their number plate at reception for free parking.

By Bus

Collapse -

- There is not a bus stop within 150 metres of the hotel.
- The nearest bus stop is on Tachbrook Park Drive opposite Allen Ford Car Dealership, approx 0.5 miles from the hotel.
- [For more information on Warwickshire Bus Information please click here \(opens new tab\) \(https://www.warwickshire.gov.uk/buses\).](https://www.warwickshire.gov.uk/buses)

By Train

Collapse -

- The nearest Railway Station is Leamington Spa.
- Leamington Spa Station is approximately 1.2 miles from the hotel. There are bus and taxi routes from the station.
- [For more information on National Rail please click here \(opens new tab\) \(http://www.nationalrail.co.uk/stations/LMS/details.html\).](http://www.nationalrail.co.uk/stations/LMS/details.html)

Getting Help and Assistance

Collapse -

- There is a member of staff available for help and assistance.
- Staff receive disability awareness/equality training.
- Staff receive deaf awareness training.
- There is not a member of staff trained in British Sign Language.
- British Sign Language interpreters cannot be provided on request.
- The alternative formats documents can be provided in include; Braille on request and large print on request.
- There is an assistance dog toilet or toileting area at the venue/near by.
- The assistance dog toilet or toileting area is located on the grassed areas in the car park.
- Water bowls for assistance dogs are available.
- There are not mobility aids available.

Parking

Collapse -

Parking

Collapse -

- The hotel does have its own parking facilities.
- The car park is located at the front of the hotel.
- The car park type is open air/surface.
- The car park does not have a height restriction barrier.
- The car park does not have a barrier control system.
- The car park surface is tarmac.
- There is a/are Blue Badge parking bay(s) available.
- The Blue Badge bay(s) markings are faded.
- There is/are 2 designated Blue Badge parking bay(s) within the car park.
- The dimensions of the designated Blue Badge parking bay(s) surveyed are 300cm x 500cm (9ft 10in x 16ft 5in).
- There is not a 120cm hatched zone around the Blue Badge parking bay(s).
- Parking spaces for Blue Badge holders do not need to be booked in advance.
- Clearly marked/signposted parent and child parking bays are not available.
- All parking spaces are provided on a first come first served basis.

Paying

Collapse -

- There are not parking charges for the car park.

Access from the Car Park

Collapse -

- The route from the car park to the entrance is accessible to a wheelchair user unaided.
- The entrance is clearly visible from the car park.
- The surface on the approach to the entrance is tarmac and block paving.
- There is a road to cross between the car park and the entrance.
- There is no tactile paving on dropped kerbs between the car park and the entrance.
- The nearest designated Blue Badge parking bay is approximately 48m (52yd 1ft) from the hotel entrance.

Drop-off Point(s)

Collapse -

- There is not a/are not clearly marked drop-off point(s).



1



2



3



4



5

Outside Access (Hotel Entrance)

Collapse -

Entrance

Collapse -

- This information is for the entrance located at the front of the hotel.

- The entrance area/door is clearly signed.
- There is ramped/sloped access at this entrance.
- There is a canopy or recess which provides weather protection at this entrance.
- There is a dark mat or floor marking at this entrance that might be perceived as a hole.
- The entrance door(s) does not/do not contrast visually with its immediate surroundings.
- The main door(s) open(s) away from you (push).
- The door(s) is/are double width.
- The door(s) is/are heavy.
- The width of the door opening is 146cm.
- There is a small lip on the threshold of the entrance, with a height of 2cm or below.
- There is a second set of doors.
- The door(s) open(s) away from you (push).
- The door(s) is/are double width.
- The door(s) is/are heavy.
- The width of the door opening is 146cm.
- There is a small lip on the threshold of the entrance, with a height of 2cm or below.

Ramp/Slope

Collapse -

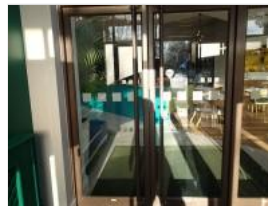
- The ramp/slope is located in front of the entrance.
- There is a slope with a very easy incline.



1



2



3

Reception

Collapse -

Reception

Collapse -

- The reception point is located ahead as you enter the hotel entrance.
- The reception point is approximately 9m (9yd 2ft) from the hotel entrance.
- The reception area/desk is clearly visible from the entrance.
- There is step-free access to the reception point.
- There is a clear unobstructed route to the reception point.
- There are no windows, TVs, glazed screens or mirrors behind the reception point which could adversely affect the ability of someone to lip read.
- The reception counter is not placed in front of a background which is patterned.
- The lighting levels at the reception point are good.
- The height of the reception counter is medium height (77cm - 109cm).
- There is sufficient space to write or sign documents on the counter.
- There is not a lowered section of the counter.
- The counter is staffed.
- Clipboards can be provided to anyone who is unable to use the desk.
- There is a hearing assistance system at the reception point.
- The type of system is a fixed loop.
- The hearing assistance system is not signed.
- Staff are trained to use the system.
- Signs and universally accepted symbols or pictograms, indicating lifts, stairs, WCs, circulation routes and other parts of the building are not provided in the reception area.

- The type of flooring in the reception area is carpet and stone.

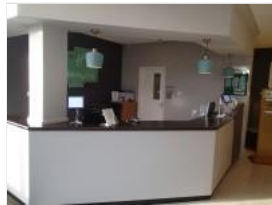
Reception Waiting Area

Collapse -

- There is a waiting area close to the reception point.
- Access to the waiting area is unobstructed.
- There are seats with armrests on both sides.
- There is sufficient space for a wheelchair user to use the waiting area.



1



2



3



4

Getting Around

Collapse -

Access

Collapse -

- There is step-free access throughout the building.

Circulation

Collapse -

- There are doors in corridors/walkways which have to be opened manually.
- The type of flooring in corridors/walkways is carpet and stone.
- There is some flooring in corridors/walkways which includes patterns or colours which could be confusing or look like steps or holes to some people.
- There is some flooring in corridors/walkways which is shiny and could cause issues with glare or look slippery to some people.
- There is good colour contrast between the walls and floor in all corridors/walkways.
- There are seats with armrests on both sides at regular intervals.
- The lighting levels are varied.
- Access to other floors/levels is via stairs and lift.

Signage

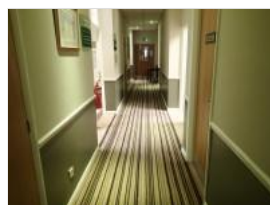
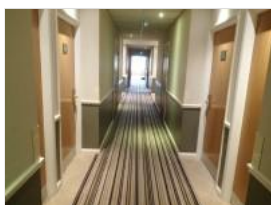
Collapse -

- Wayfinding signage is provided.
- The colour, design and typeface of signs is consistent throughout the building.

Audio

Collapse -

- This venue does play background music in public areas.
- Music is played in the lobby.
- There is not a hearing assistance system in the public areas of the building.



1

2

3

4

Eating and Drinking (Restaurant/Bar)

Collapse -

- The following information is for the restaurant/bar.
- The restaurant/bar is located on the ground floor, to the right as you enter the hotel entrance.
- There is step-free access to the restaurant/bar.
- Full table service is available.
- Food and/or drinks can be ordered from the service counter.
- There is not a hearing assistance system.
- There is step-free access within the restaurant/bar.
- There is ample room for a wheelchair user to manoeuvre.
- This area does play background music.
- The type of flooring in this area is carpet, vinyl and laminate.
- No tables are permanently fixed.
- Some chairs are permanently fixed.
- Some chairs have armrests on both sides.
- The nearest table is approximately 1m from the entrance/opening.
- The nearest table is approximately 3m from the till/counter.
- The distance between the floor and the lowest table is 57cm.
- The distance between the floor and the highest table is 99cm.
- Plastic/takeaway cups are available.
- Plastic/takeaway cutlery is not available.
- Drinking straws are available.
- There are hand held menus available.
- Menus are not available in Braille.
- Menus are not available in large print.
- Picture menus are not available.
- Menus are clearly written.
- Menus are presented in contrasting colours.
- The type of food served here is Fine Dining.
- The lighting levels are varied.



1



2



3



4



5

Conference / Meeting Facilities (Syndicate Room 008)

Collapse -

- Conference/meeting facilities are available.
- The conference/meeting facilities are located on the ground floor, in the corridor to the left of reception.
- There is step-free access to the conference/meeting facilities.
- The door opening width(s) is/are 75cm+ for the room(s).

- There is not a hearing assistance system for the room(s).
- There are no chairs with armrests on both sides within the room(s).
- There is sufficient space for a wheelchair user to manoeuvre within the room(s).
- The lighting levels in the room(s) are good.



1



2

Conference / Meeting Facilities (Kenilworth Suite)

Collapse -

- Conference/meeting facilities are available.
- The conference/meeting facilities are located on the ground floor, in the corridor to the right of reception.
- There is step-free access to the conference/meeting facilities.
- The door opening width(s) is/are 75cm+ for the room(s).
- There is not a hearing assistance system for the room(s).
- There are no chairs with armrests on both sides within the room(s).
- There is sufficient space for a wheelchair user to manoeuvre within the room(s).
- The lighting levels in the room(s) are adjustable.

Comments

Collapse -

- There is a similar room in the same location called the Warwick Suite.
- This room can be doubled in size by opening the dividing wall into the Warwick Suite.



1



2

Fitness Suite

Collapse -

Access to Fitness Suite

Collapse -

- The fitness suite is located on the ground floor, in the corridor to the right of reception.
- The fitness suite is 28m (30yd 1ft) from the hotel entrance.
- There is level access to the fitness suite.
- There are doors into the fitness suite.
- The doors open away from you (push).
- The doors are single.
- The doors are heavy.
- The opening is 75cm (2ft 6in) wide.

Fitness Suite (General)

Collapse -

- A portable hearing loop is not available for induction.

- There is not clear manoeuvring space between equipment.
- There is level access to all of the equipment.

Comments

Collapse -

- This is a small unmanned air-conditioned fitness room with basic fitness equipment.
- Access is via room key card.



1



2

Accessible Room(s) (Rooms 17 and 19)

Collapse -

Accessible Room Information

Collapse -

- The details in this section relates to the accessible room(s) with a bath.
- This type of accessible room is located on the ground floor.
- There is step-free access to this type of accessible room.
- All accessible rooms of this type have similar specifications.
- Guests do not need to open a door between the entrance and the room(s).
- The narrowest width of the corridor leading to the room surveyed was 132cm.

Bedroom Features

Collapse -

- The accessible room surveyed is located on the ground floor, in the corridor to the left of reception.
- The accessible room surveyed at the time of the visit was Room 17.
- There is step-free access to the accessible room surveyed.
- There is numbered signage on or near the accessible room door.
- The door is manual with a key card lock.
- The fob/card reader height is 104cm.
- The width of the door is 75cm (2ft 6in).
- There are lowered spy holes available.
- The bed type is double.
- The bed height is not adjustable.
- The height of the bed is 64cm (2ft 1in).
- The measurement between the bed base and floor is 5cm (2in).
- The bed is not moveable.
- The room does not have an unobstructed minimum turning space of 150cm x 150cm next to the bed.
- The height of the desk is 73cm.
- The desk is not height adjustable.
- The desk knee recess has the recommended dimensions of 70cm (height) x 50cm (depth).
- The room surveyed had a desk chair without armrests and an armchair.
- Wardrobes have been adapted to allow use from a seated position.
- Light switches are between 75cm and 120cm (4ft) from floor level.
- Electric sockets are not between 40cm and 100cm (4ft) from floor level.
- The window control type(s) for the room is a/are standard lever(s).
- There is an emergency alarm in the room.
- The emergency pull cord alarm is tied up and out of reach (higher than 10cm (4") from floor).

- The emergency alarm rings to Reception.
- There is not a flashing fire alarm beacon within the room.
- The type of flooring is carpet.

Ensuite Facilities

Collapse -

- The ensuite door opens by sliding.
- The door weight is heavy.
- The door is locked by a hook.
- The width of the door to the ensuite is 72cm (2ft 4in).
- The dimensions of the ensuite are 145cm x 180cm (4ft 9in x 5ft 11in).
- The ensuite does not have an unobstructed minimum turning space of 150cm x 150cm in front of the toilet seat.
- The ensuite has not got a non-slip floor.
- There is an emergency alarm within the ensuite.
- The emergency pull cord alarm is within reach and fully functional.
- The emergency alarm rings to Reception.
- There is not a flashing fire alarm beacon within the ensuite.
- Disposal facilities are available.
- There is a/are pedal waste paper bin disposal units.
- There is a mirror.
- The mirror is not placed at a lower level or at an angle for ease of use.
- There is a shelf immediately next to or behind the toilet.
- The shelf is not between 90cm and 100cm.
- There is a wash basin.
- The wash basin cannot be reached from seated on the toilet.
- The wash basin is not placed higher than 74cm (2ft 5in).
- The height of the wash basin is 74cm.
- There are no vertical wall-mounted grab rails at the wash basin.
- The tap type is lever.
- There is a mixer tap.
- There is not a soap dispenser.

Toilet Details

Collapse -

- The height of the toilet seat above floor level is 43cm (1ft 5in).
- The toilet has a lid.
- There is a lateral transfer space.
- As you face the toilet pan the transfer space is on the left.
- The lateral transfer space is 75cm (2ft 6in).
- There is a flush on the transfer side.
- There is not a spatula type lever flush.
- There is a dropdown rail on the transfer side.
- There is a/are wall-mounted grab rail(s) available.
- As you face the toilet, the wall mounted grab rails are on both sides.
- There is a vertical wall-mounted grab rail on the transfer side.
- There is not a horizontal wall-mounted grab rail on the opposite side of the seat to the transfer space.
- There is a toilet roll holder.
- The toilet roll holder can be reached from seated on the toilet.
- The toilet roll holder is not placed higher than 100cm (3ft 3in).
- The height of the toilet roll holder is 60cm (1ft 12in).

Bath Details

Collapse -

- The ensuite has a bath.

- The height of the side of the bath from floor level is 55cm (1ft 10in).
- The tap type is twist/turn.
- There is a mixer tap.
- There is a shower over the bath.
- The shower head is height adjustable.
- The shower control type is twist/turn.
- There is a/are wall-mounted grab rail(s) available for the bath.

Colour Contrast and Lighting

Collapse -

- The colour contrast between the external hotel room door and wall is good.
- The colour contrast between the internal hotel room door and wall is good.
- The colour contrast between the hotel room walls and floor is good.
- The colour contrast between the external ensuite door and wall is good.
- The colour contrast between the internal ensuite door and wall is good.
- The colour contrast between the ensuite walls and floor is poor.
- The colour contrast between the drop down rail(s) and wall is poor.
- The colour contrast between the wall-mounted grab rail(s) and wall is good.
- The toilet seat colour contrast is poor.
- The lighting levels in the room are adjustable.
- The lighting levels in the ensuite are good.



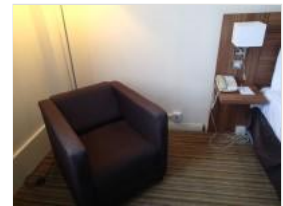
1



2



3



4



5



6



7

Standard Room(s) (Room 10)

Collapse -

Bedroom Features

Collapse -

- The room surveyed is located on the ground floor, in the corridor to the left of reception.
- The room surveyed at the time of the visit was Room 10.
- There is step-free access to the room surveyed.
- There is numbered signage on or near the room door.
- The width of the door is 75cm (2ft 6in).
- The bed type is zip and link.
- The height of the bed is 65cm (2ft 2in).
- The measurement between the bed base and floor is 5cm (2in).
- Light switches are not within 120cm (3ft 11in) from floor level.
- There is not an emergency alarm in the room.
- There is not a flashing fire alarm beacon within the room.
- The type of facilities within the ensuite include; a toilet, a wash basin and a bath.

- The ensuite door opens inwards.
- The width of the door to the ensuite is 71cm (2ft 4in).
- There is not an emergency alarm within the ensuite.
- There is not a flashing fire alarm beacon within the ensuite.
- The tap type is lever.
- There is a mixer tap.

Colour Contrast and Lighting

Collapse -

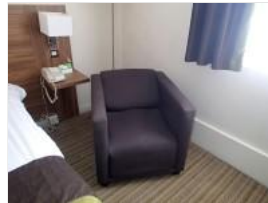
- The colour contrast between the external hotel room door and wall is good.
- The colour contrast between the internal hotel room door and wall is good.
- The colour contrast between the hotel room walls and floor is good.
- The colour contrast between the external ensuite door and wall is good.
- The colour contrast between the internal ensuite door and wall is good.
- The colour contrast between the walls and floor in the ensuite is fair.
- The lighting levels in the room are adjustable.
- The lighting levels in the ensuite are good.



1



2



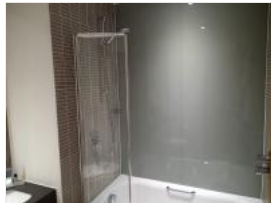
3



4



5



6

Other Floors

Collapse -

Stairs

Collapse -

- Stairs can be used to access other floors.
- The stairs are for public use.
- The stairs are located in the main corridor to the right of reception.
- The stairs are approximately 33m from the hotel entrance.
- Signs indicating the location of the stairs are not available from the entrance.
- There are manual, heavy, single doors to enter and exit the stairwell on all floors.
- The floors which are accessible by stairs are G, 1 and 2.
- There are 15+ steps between floors.
- The height of the step(s) is/are between the recommended 15cm and 18cm.
- The going of the step(s) is/are between the recommended 30cm and 45cm.
- The steps are clearly marked.
- There is a/are handrail(s) at the step(s).
- The steps have a handrail on both sides.
- Handrails are at the recommended height (90cm-100cm).
- Handrails do cover the flight of stairs throughout its length.
- Handrails are easy to grip.

- Handrails do not extend horizontally beyond the first and last steps.
- There is a landing.
- Clear signs indicating the facilities on each floor are not provided on landings.
- The lighting levels at the steps are good.



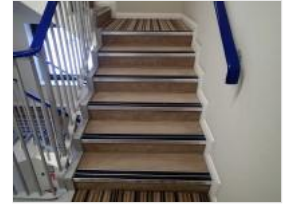
1



2



3



4

Lift

Collapse -

- There is a lift for public use.
- The lift is located in the main corridor to the right of reception.
- Signs indicating the location of the lift are clearly visible from the entrance.
- The lift is approximately 30m (32yd 2ft) from the hotel entrance.
- The lift is a standard lift.
- A member of staff does not need to be notified for use of the lift.
- The floors which are accessible by this lift are G, 1 and 2.
- Clear signs indicating the facilities on each floor are not provided on lift lobby landings.
- There is a clear level manoeuvring space of 150cm x 150cm in front of the lift.
- Lift doors do contrast visually with lift lobby walls.
- The external controls for the lift are within 90cm - 110cm from the floor.
- The colour contrast between the external lift controls and the control plate is good.
- The colour contrast between the external lift control plate and the wall is good.
- The clear door width is 110cm (3ft 7in).
- The dimensions of the lift are 111cm x 138cm (3ft 8in x 4ft 6in).
- There are no separate entry and exit doors in the lift.
- There is a mirror to aid reversing out of the lift.
- There is a list of floor services available within the lift.
- The lift does have a visual floor indicator.
- The lift does have an audible announcer.
- The controls for the lift are within 90cm - 120cm from the floor.
- There is not a hearing loop system.
- The lift does not have Braille markings.
- The lift does have tactile markings.
- The lighting levels in the lift are good.



1



2

Standard Room(s) (Executive Room 202)

Collapse -

Bedroom Features

Collapse -

- The room surveyed is located on the second floor, to the left as you exit the lift.

- The room surveyed at the time of the visit was Room 202.
- There is step-free access to the room surveyed, via lift.
- There is numbered signage on or near the room door.
- The width of the door is 75cm (2ft 6in).
- The bed type is zip and link.
- The height of the bed is 65cm (2ft 2in).
- The measurement between the bed base and floor is 5cm (2in).
- Light switches are not within 120cm (3ft 11in) from floor level.
- There is not an emergency alarm in the room.
- There is not a flashing fire alarm beacon within the room.
- The type of facilities within the ensuite include; a toilet, a wash basin and a shower.
- The ensuite door opens inwards.
- The width of the door to the ensuite is 72cm (2ft 4in).
- There is not an emergency alarm within the ensuite.
- There is not a flashing fire alarm beacon within the ensuite.
- The tap type is lever.
- There is a mixer tap.

Colour Contrast and Lighting

Collapse -

- The colour contrast between the external hotel room door and wall is good.
- The colour contrast between the internal hotel room door and wall is good.
- The colour contrast between the hotel room walls and floor is good.
- The colour contrast between the external ensuite door and wall is good.
- The colour contrast between the internal ensuite door and wall is good.
- The colour contrast between the walls and floor in the ensuite is fair.
- The lighting levels in the room are adjustable.
- The lighting levels in the ensuite are good.

Comments

Collapse -

- There is a deep step to access the shower.



1



2



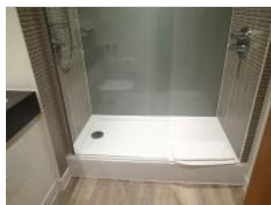
3



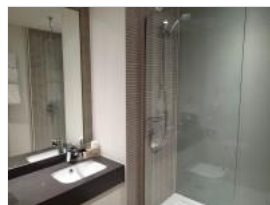
4



5



6



7

Accessible Toilet(s)

Collapse -

- There is an/are accessible toilet(s) for public use.

Location and Access

Collapse -

- The accessible toilet surveyed is not for the sole use of disabled people.
- This accessible toilet is located on the ground floor, in the corridor to the left of the bar.
- This accessible toilet is approximately 23m (25yd 6in) from the hotel entrance.
- There is step-free access to the accessible toilet.

Features and Dimensions

Collapse -

- This is a shared toilet.
- A key is not required for the accessible toilet.
- There is pictorial signage on or near the toilet door.
- The door opens outwards.
- The door is heavy.
- The door is locked by a twist lock.
- The width of the accessible toilet door is 84cm (2ft 9in).
- The dimensions of the accessible toilet are 147cm x 200cm (4ft 10in x 6ft 7in).
- The accessible toilet does not have an unobstructed minimum turning space of 150cm x 150cm.
- The toilet has not got a non-slip floor.
- There is a lateral transfer space.
- As you face the toilet pan the transfer space is on the right.
- The lateral transfer space is 75cm (2ft 6in).
- There is a flush on the transfer side.
- There is not a spatula type lever flush.
- There is a dropdown rail on the transfer side.
- There is an emergency alarm.
- The emergency pull cord alarm is not fully functional.
- The alarm was out of reach (higher than 10cm (4") from floor) when surveyed.
- There is not a flashing fire alarm beacon within the toilet.
- Disposal facilities are available in the toilet.
- There is a/are female sanitary, non-infectious waste and waste paper pedal bin disposal units.
- There is a/are coat hook(s).
- The height of the coat hook is 110cm from the floor.

Position of Fixtures

Collapse -

- There is a/are wall-mounted grab rail(s) available.
- As you face the toilet the wall-mounted grab rail(s) is/are on both sides.
- There is a vertical wall-mounted grab rail on the transfer side.
- There is a horizontal wall-mounted grab rail on the opposite side of the seat to the transfer space.
- There is a mirror.
- The mirror is not placed at a lower level or at an angle for ease of use.
- There is not a shelf next to the toilet.
- The toilet has a lid.
- The height of the toilet seat above floor level is 45cm (1ft 6in).
- There is a toilet roll holder.
- The toilet roll holder can be reached from seated on the toilet.
- The toilet roll holder is not placed higher than 100cm (3ft 3in).
- The height of the toilet roll holder is 90cm (2ft 11in).
- There is a wash basin.
- The wash basin cannot be reached from seated on the toilet.
- The wash basin is not placed higher than 74cm (2ft 5in).
- The height of the wash basin is 73cm (2ft 5in).
- There is a vertical wall-mounted grab rail on the right hand side of the wash basin.
- The wash basin tap type is lever.
- There is a mixer tap.

- There is a soap dispenser.
- The soap dispenser cannot be reached from seated on the toilet.
- The height of the soap dispenser is 103cm.
- There is a towel dispenser.
- The towel dispenser cannot be reached from seated on the toilet.
- The towel dispenser is placed higher than 100cm (3ft 3in).
- The height of the towel dispenser is 109cm (3ft 7in).
- There is not a hand dryer.

Colour Contrast and Lighting

Collapse -

- The contrast between the external door and wall is good.
- The contrast between the internal door and wall is good.
- The contrast between the dropdown rail(s) and wall is poor.
- The contrast between the wall-mounted grab rail(s) and wall is good.
- The toilet seat colour contrast is good.
- The contrast between the walls and floor is poor.
- The lighting levels are good.

Baby Changing Facilities

Collapse -

- Baby changing facilities are located within the accessible toilet.
- The baby change table is not set against the wall, permanently fixed at 75cm from the floor.
- The baby change table is not height adjustable.
- The height of the baby change table once extended is 120cm (3ft 11in).



1



2



3

Standard Toilet(s)

Collapse -

- Standard toilet facilities are available.

Access to Standard Female Toilet(s)

Collapse -

- The female toilet facilities that were surveyed are located on the ground floor, in the corridor to the left of the bar.
- The female toilet(s) is/are approximately 24m (26yd 9in) from the hotel entrance.
- There is step-free access to the female toilet(s).
- There is pictorial signage on or near the toilet door.
- An ambulant toilet with wall-mounted grab rails is not available.
- The wash basin tap type is lever.
- There is not a flashing fire alarm beacon within the toilets.
- Lighting levels are good.

Access to Standard Male Toilet(s)

Collapse -

- The male toilet facilities that were surveyed are located on the ground floor, in the corridor to the left of the bar.
- The male toilet(s) is/are approximately 22m (24yd 2in) from the hotel entrance.